



GUJCON[®]

The Global Door Creator

Web: www.gujcon.com | E-mail: info@gujcon.com

INTRODUCTION

- **Founded in 1988 by Mr. Shankarlal Keshrani**
- **Started operation in 1990 at G.I.D.C. Sachin, Surat**
- **GUJCON relentless focus on delivering product that beauty and functionality.**
- **Creating greater value to our Customers.**
- **Aim to produce only high quality and international standard products**

The Global Door Creator



Mr. Shankarlal Keshrani
Founder and Chairman

- ✓ **Mr. Shankarlal Keshrani is founder and Chairman of Gujcon**
- ✓ **His relentless effort and striving for new technology brought all types of international brands under one roof.**
- ✓ **Eco Green his brain child product came into reality with guidance of PUM Netherland.**
- ✓ **Introduction of Masonite, USA moulded panel Door first time in India**
- ✓ **Automation of process bring in conformity of product / error free product**

GUJCON[®]

The Global Door Creator

COLLABORATION



- ✓ **Authorised Assembler**
- ✓ **Masonite Moulded panel doors introduced in India by GUJCON**
- ✓ **Gujcon is introducing Masonite door with polish in India.**
- ✓ **we are also authorised to Print the masonite logo on company's visiting card**

Door Creator

ECO GREEN DOOR

PUM, NETHERLAND AND FRI, DEHRADUN

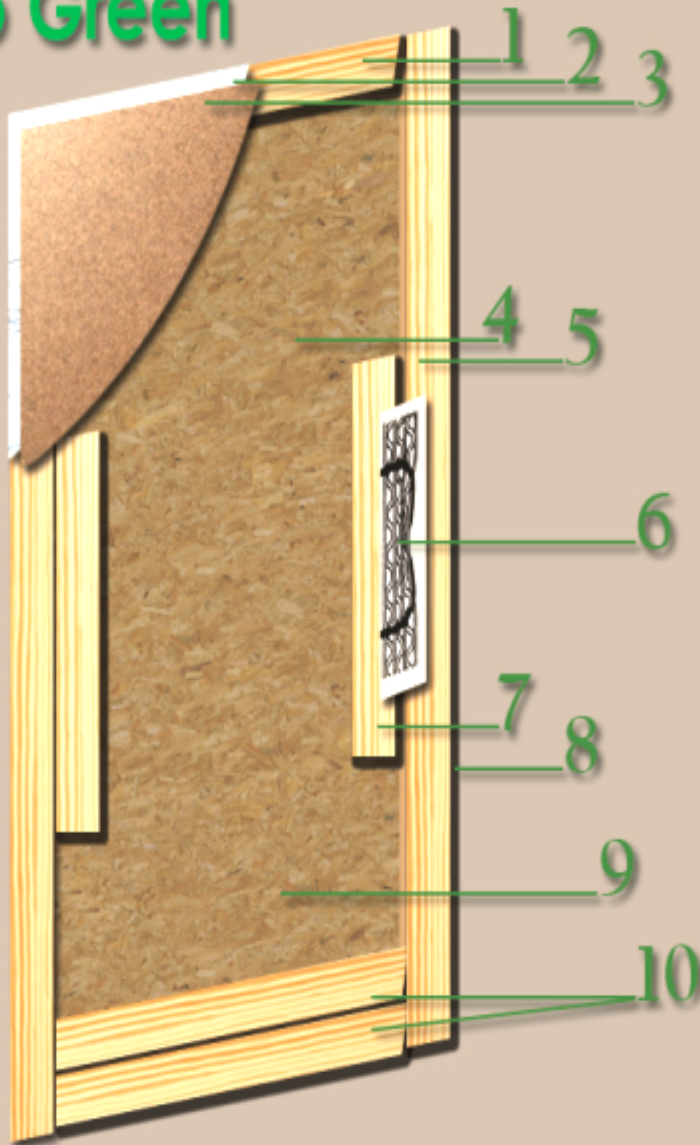
ECO GREEN: developed by following the guidelines by PUM, Netherland and

- ✓ FRI, Dehradun
- ✓ Eco Friendly
- ✓ Zero Error
- ✓ Durable and Elegant
- ✓ Can go with
 - a) Plain
 - b) Molded
 - c) Laminate
 - d) Veneer
 - e) Membrane

GUJCON[®]

The Global Door Creator

Eco Green



Structure of Eco Green Door

1. **Top Rail:** imported pine wood 4 inch wide.
2. **Water resistance:** chemical treated door
3. **Imported HDF / Masonite Skin**
4. **Resin:** ISI brand
5. **Stail Rail:** Imported pine wood 4 inch wide
6. **Stake:** joined with pneumatic staple
7. **Lock rail:** imported pine wood
8. **Thickness:** 32 mm
9. **Particle board:** pine based particle board / tubular core by Saureland, Germany.
10. **2"+4" inches imported pine wood.**

We see choices. But do we see chances?

Choices rely on cost mostly. But a little-less-cost might possibly be the reason of recklessness.

Door Creator

Advantages of Eco Green

Overcoming the tradition door problems such as

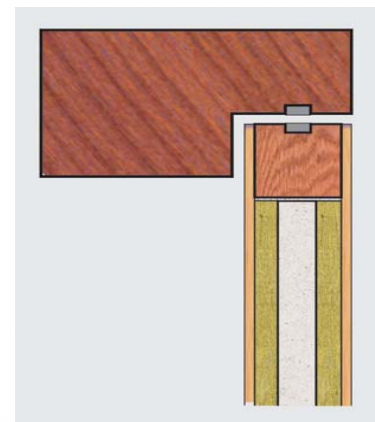
- Shrinking, Swelling or Twisting
- Delamination
- Surface variation
- Core gap / Core overlapping
- Black spot
- Borer & termite
- Dimensionally Stable
- Superior Screw Holding
- scratch

G U J C O N[®]

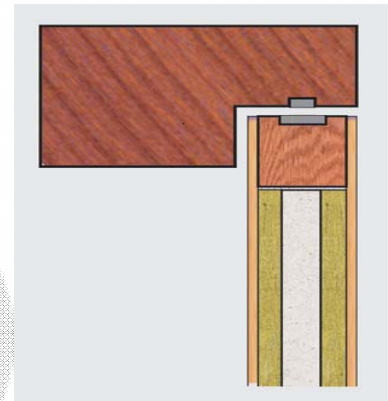
The Global Door Creator

Promat

- **Gujcon is working as a solution provider.**
- **1 hour fire rated doors system tested for Integrity & Insulation Criteria as per the IS:3614 Part 2 and BS:476 part 20**
- **with standard heating conditions as specified in IS:3809 - 1979 and BS:476 part 20 & 22 1987 to achieve the required integrity & insulation.**
- **2 Hours fire rated doors system duly tested for Integrity & Insulation Criteria as per the IS:3614 Part 2 and BS:476 part 20**
- **at Fire Research Laboratory Central Building Research Institute (CBRI) Roorkee with standard heating conditions as specified in IS:3809 - 1979 and BS:476 part 20 & 22 1987 to achieve the required integrity & insulation**



1 Hour Fire Rating Door



2 Hour Fire Rating Door

Specification: -

- to restrict the heat radiation, temperature rise on the non fire side to the maximum of 140 degree Centigrade above the ambient temperature on the unexposed surface of the shutter.
- 45mm thick single leaf shutter made out of perimeter railing of Hard Wood as per fire rating specification of size 100mmX22mm and **2 nos. of 8mm thick CALCIUM SILICATE board** faced with 0.25mm thick Face Veneer & 2mm thick 4 Layer of Core Veneer with 10mm thick teak wood beading on all side and Promaseal Intumescent sealant is used to seal the gaps between CALCIUM SILICATE board and shutter beading.
- GUJCON provides: 30 mins, 60 mins, 120 mins fire rated.

GUJCON®

The Global Door Creator

FRP DOORS



GUJCON FRP Doors are specially coated with general polyester resin and fibreglass matt to make them absolutely aquaproof.

- They are durable, maintenance free, pest proof, 100% Aquaproof, eco friendly and self pigmented.
- FRP doors possess absolute freedom from door
 - ✓ jamming,
 - ✓ repainting and
 - ✓ decay during rainy season.
 - ✓ perfect solution for bathroom and terrace as against traditional doors.
 - ✓ They can also be painted to suite your décor.
 - ✓ FRP doors are also available in flush door (texture finish).
- Note : we also provide FRP door frame

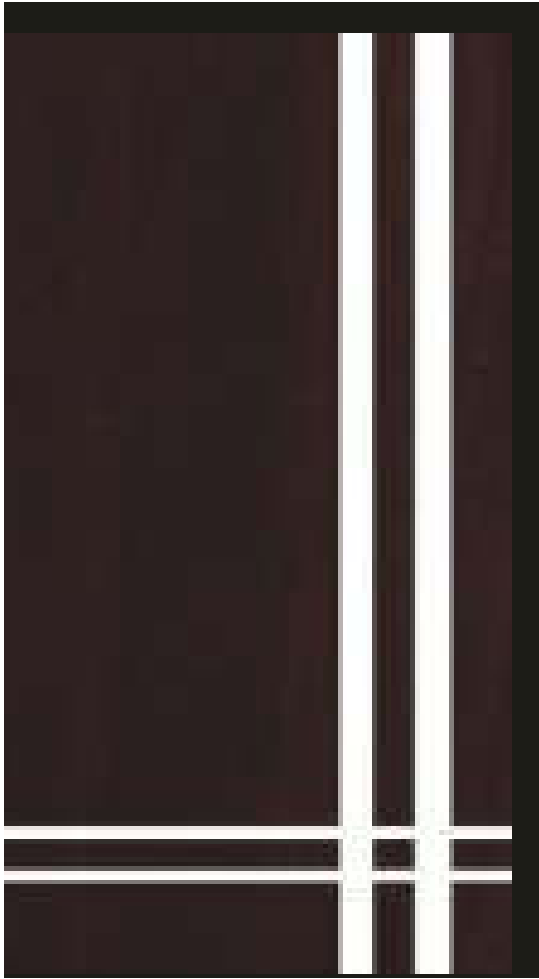
The Global Door Creator

Laminated doors, unlock the possibilities



- ❖ (HPDL) high pressure decorative laminates
- ❖ offering subtle textures and dynamics contrast.
- ❖ hundreds of vibrant colours.
- ❖ Abstracts, metallic
- ❖ realistic woodgrains to choose
- ❖ Custom laminates make it possible to design your own surfaces for special projects.

The Global Door Creator



LAMINATION DOORS

- Resin Coated Door with Gloss, Matt and Texture finish
- Desired aesthetics and protective finish to the doors.
- GUJCON lamination door is popular with architects
- Scratch resistance
- Excellent color retention
- Heat resistance and moisture resistance

GUJCON[®]

The Global Door Creator

SOLID WOOD DOOR



- GUJCON Doors are made out by german technology of finger jointed and edge glued panels.
- GUJCON Doors can be colored or polished to your choice in every time to suite your interiors or exterior. Easy to install with low maintenance.
- Available in different sizes, surfaces and compatible any décor.

GUJCON®
The Global Door Creator



Kapi Doors

- Kapi doors series introduces first time in India
- Uses Turkish Technology
- Exclusive rich look
- Durability
- Available in different colours

GUJCON[®]

The Global Door Creator

Membrane Door

- Raw material is of fine wood particle
- Hazardous free resin (special water resistant which avoids the problem of wrapping, cracking, water absorbing)
- Degreasing high temperature drying
- High quality PVC foil (imported from South Korea)
- Gave fine surface finishing

The Global Door Creator



Veneer Flush Doors

- Manufactured using highest quality of wood veneer available
- Solid core
- Tublar core
- Honey comb core designs
- Offer the visual beauty and refinement of natural wood doors.

GUJCON®

The Global Door Creator

VENEER MOLDED DOORS



- Made of 3 mm HDF
- Veneer by secondary molded pressing
- Looks neutral and comfortable
- Durable and not easy to split
- Water proof
- No delaminating
- Fire retardant
- Noise deadening and scratch resistance

GUJCON[®]

The Global Door Creator

Infrastructure

- Plant area Spanning of 10000 sq meters
- Automated and semi automated machineries
- Hydraulic press 8x4
- Seasoning plant, chemical plant
- Computerised CNC machine for Routing
- Double End Tenoner – German – side cutting
- Edge Banding Machine – German – pvc lipping
- Wide belt sanding – Netherlands – Calibration
- Four Side Planner – Britain – Surface Finishing
- Multi Rip Saw – German – bit cutting
- Frame tenoning machine – Netherlands – Corner Jointer

The Global Door Creator